



EST-LAT Orienteering league, Stage 7, MTBO Latvian Open MTBO championship 2011

ORGANIZERS

Latvian Orienteering federation (LOF), OK "Purva bridējs" and association "Piedzīvojumu parks"..

Competition director: Reinis Zobens

Distance planning: Māris Strautnieks

MTBO map author: Māris Strautnieks

Competition inspector: Uģis Voiceščuks

SportIdent punching system: Andris Strazdiņš



Ķekavas novada
kultūras aģentūra

PLACE AND PROGRAM

Saturday, 16.07.2011 – MIDDLE DISTANCE

Smiltene, Kalnamuiža. Marking from Valka Street

12:00-13:30 participant registration in the competition centre

14:00 start for the middle distance

17:30 prize awarding



ok Purva Bridējs

Sunday, 17.07.2011 - LONG DISTANCE

Smiltene, Kalnamuiža. Marking from Valka Street

8:30-9:30 participant registration in the competition centre

10:00 start for the long distance

14:30 prize awarding



Location on map: <http://goo.gl/nBrfP>

PARTICIAPNTS, AGE GROUPS

Age groups:

M16, M18, M20, M21, M40, M50, M60

W16, W18, W20, W21, W40, W50

In addition group **OPEN** – short and easy distance.



NEATKARĪGĀS LATVIJAS HITI

Latvian championship medals are awarded to winners of groups M16,W16,M21,W21,M40,W40 registered in Latvian orienteering database for year 2011 (<http://mona.lv/odb>).

All orienteers, who are registered in EOF or LOF Orienteering databases (<http://www.orienteerumine.ee/orienteerujad/index.php>, <http://mona.lv/odb/2010/index.php>) by the final date of registration for competition (with the exception of those starting on the Open course) participate in the ranking of the EST-LAT Orienteering league. The event is open to nationals of other countries. Competitors representing an IOF member Federation shall have full passport-holding citizenship of the country of that Federation.

COURSE INFORMATION

Middle distance 16.07.2011.

Group	Length km (straight line)	KP number
M21	13.9	16
W21, M20, M40	9.2	13
M18, M50	8.3	11
W18, W40, M16, M60	7.6	9
W16, W50, OPEN	5.8	10

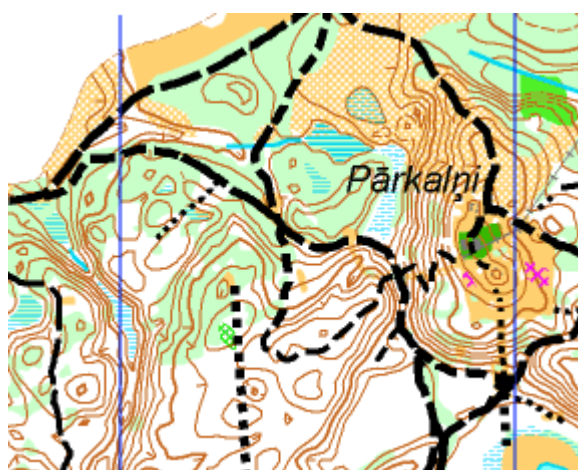
Long distance 17.07.2011.

Group	Length km (straight line)	KP number
M21	27.3	22
W21, M20, M40	19.7	19
M18, M50	16.2	16
W18, W40, M16, M60	14.5	15
W16, W50, OPEN	12.9	13

MAP, TERRAIN

Map preparation year 2011. Mapper M.Strautnieks. Map scale 1:15000 for middle distance, 1:20000 for long, H=2.5m .

Mainly coniferous tree forest. Average land forms. Network of forest roads and tracks of varying ridability. Maximum height difference 35 m. Map sample:



SPECIAL RULES

Wearing a rigid safety helmet is mandatory – participants shall not be admitted to the start without one. SI cards must be connected to the bicycle by a zip tie or other secure device. Participants must follow the traffic rules when using public roads during the race. Riding off the tracks is allowed. When trespassing the populated areas, participants are allowed to use the roads drawn on the map only. All participants have to follow Latvian Orienteering federation MTBO rules.

Participants are responsible for their own health and safety.

ACCOMMODATION POSSIBILITIES

Please visit local municipality website www.smiltene.lv

Tent places in guest house Kalbakas (very near to the event centre) www.kalbakas.lv . Price 3 LVL per tent place. Contacts for booking Liga +371 29257467;

Smiltenes technical college – Price 3 LVL/per person. Contacts for booking Mārīte Bāliņa +371 28262497.

REGISTRATION

Online registration via <http://www.mona.lv/odb/opieteikumi/lcmtb2011/piet.php?lng=en> until ~~11.07.2011~~ 13.07.2011 24:00. After deadline only registering to vacant places available, 50% rise in participation fee will be applied. OPEN group participants do not have a registering deadline, they can also register on the competition day.

PARTICIPATION FEE (PER DAY)

MW16 and 18:	2.50 LVL
MW20:	5.70 LVL
MW21, 40, 50 and M60:	7.10 LVL
OPEN	2.10 LVL
SI card rental	0,50 LVL/day
Map holder (Miry) rental	2.00 LVL/day (to guarantee map holder rental please, indicate it in registration form)

Entry fees shall be transferred to the following account:

Account holder: Biedriba "Piedzivojumu parks"

Reg. No.: 40008153064

Bank: Swedbank

IBAN: LV72HABA0551027837721

Swift: HABALV22

Participation fee can also be paid at the competition centre.

START ORDER AND AREA

Start interval of 2 minutes. Participant arrives in the start corridor 2 minutes in advance. Map is given 1 minute before the start. Start areas will be announced two weeks before the competition. Start lists will be published on OK Purva Bridējs webpage (www.purvabridejs.lv) on July 15, 2011. OPEN group participants will start freely; no start list will be set.

PUNCHING SYSTEM

SportIdent punching system will be used. Please provide personal SI card number when registering for the competition.

PRIZE AWARDING

Prizes will be given to 1-3 place winners, Latvian championship winners will also be awarded LOF medals. In case of a small participant number in a group only 1st place might be awarded.

CONTACTS

Reinis Zobens

Phone: +371 22066443

E-mail: reinis.zobens@promedia.lv

<http://www.purvabridejs.lv>